

CORPORATE PROFILE

Creating the future with water and air.

The source of power is in the stream of water, wind, and people.



Operating streams

Stream solutions supporting comfortable life and efficient production activities.

Everyday, people are unaware of the contact they make with water and air, which are indispensable to every life on earth. By controlling water and air in business and in our home life, human production has accelerated and safer and more comfort has been created.

Since our foundation in 1918, we, TERAL, have developed pumps, fans, and other diverse products that operate streams of water and air. These products play an active role in our daily life and in all areas of human production activity.

Also, what TERAL pursues is not limited to the comfort of life and efficiency of industry.

With the increasing concern for the global environment, we have embarked on the development of clean systems to clean up the environment by utilizing our water and air control technologies developed over many years, while creating products with less environmental load.

Today, we are expanding a new group brand “TERAL” in which our domestic and overseas affiliates are united.

We are undergoing a rebirth as a solution provider that provides products and systems that optimize individual customer needs through the total capability of each group company’s area of expertise.

We look to continue to meet your expectations of the TERAL group “creating the future with water and air.”

TERAL



TERAL total solution

TERAL broadens its reach of pumps and fans in the building market including apartments, condominiums and office buildings and in the industrial market including manufacturing and agriculture, and at the same time, provides complete support service.

We also provide solutions based on pumps and fans not only by simply supplying products but also by responding to needs related to customization, unitization, and systemization.

TERAL's concept of product development "Triple e"

"Top runner standards" aiming at energy savings of all motors initiated from April 2015. Under the concept of "Triple e", TERAL is promoting the development of high- efficiency products.

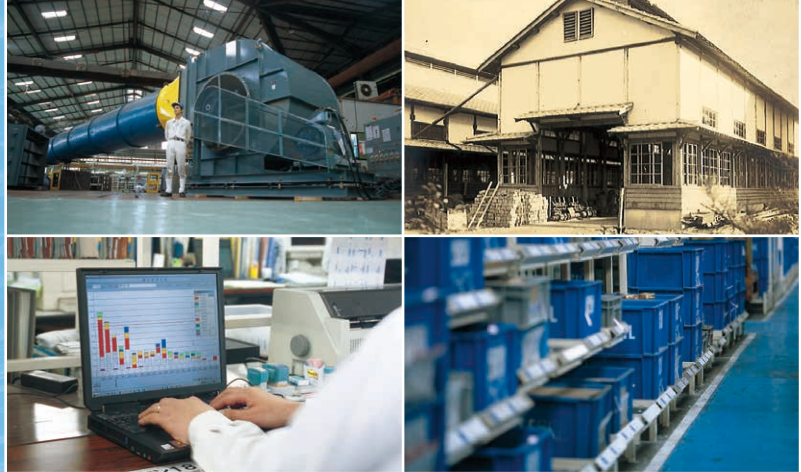


High **e**fficiency products realize
 saving **e**nergy and
 preserving the Earth **e**nvironment

C o n t e n t s

TERAL's advantages	P03
At our life scenes	P05
Result	P07
TERAL's Fields [Living]	P09
TERAL's Fields [Industry]	P11
Main Products	P13
Solutions	P15
Production System	P17
Quality Control System	P19
Research and Development System	P20
Support Services	P21
Network	P23
Company Overview	P25
Community Activities and Environmental Activities	P27
History	P29

TERAL's advantages that strengthen customer trust



Advantage

[Customization]

Flexibly responding to needs for customization

We have constructed an integrated responsible system from design and development to production, sales, and support of products. We realize speedy product development in which customer needs are reflected. Also, if it is difficult to apply existing products in size, shape, specification, etc., we flexibly respond to customization to deliver optimum products to customers.

[History]

Credibility and results backed up by 100 years or more of history.

TERAL was founded in 1918. Since then, we have developed a wide variety of products for household use through large-scale plants as a manufacturer specializing in pumps and fans. We have also always pursued product development and extensive service from the customer's perspective, which are highly valued by our many customers. Our results demonstrated by 100 years or more of history represent our credibility and safety.

[Optimization of delivery time]

Realizing optimization of delivery times by implementing through controls.

In order to meet customer-requested deadlines, we have uniquely developed and introduced an on-site "load management system" that integrates the management of processes from receipt of orders to shipment of products, in which we practice thorough quality and delivery controls. As a result, we always pursue CS improvements, such as realization of prompt and reliable product supply, even when receiving an order for one product.

[Diversification]

Enhanced product lineup offering discrete products through to unit products.

As a result of meeting various customer needs, we provide a wide selection from small equipment to large equipment. Also, our product lineup offers not only single products but also a large number of unit products with space savings and maintainability enhanced by combining various members and components. In particular, our water supply, filtration, and fire pump unit products are highly valued.

[Research and development]

Promoting research and development with an eye toward the next generation.

We explore and develop leading-edge technology in cooperation with research institutions and universities. The engineering department performs research and development for highly-efficient and eco-friendly design, high efficiency design based on flow analysis, worry-free design based on structural analysis, etc., and also proactively addresses the development of products anticipating the needs of the next generation.



Intage

[Quality]

Securing a thoroughgoing quality control system by performing 100% inspections.

With the introduction of leading-edge testing equipment, the quality assurance department performs 100% inspections thoroughly from delivered component inspections, point-by-point inspections in each line of machining and assembly, through operation inspections before shipment. Since our foundation, we have persistently taken an uncompromising stance on quality to deliver reliability and safety to customers.

[Support]

Support system to quickly respond to unexpected trouble.

We support stable operation of equipment by securing a 24-hour emergency service system to quickly respond to unexpected trouble as well as daily maintenance and inspection. We also provide prompt service in improvement and proposal of equipment, comprehensive consultation, etc., via a service network that links 50 bases across the nation in cooperation with each group company.

[Globalization]

Expanding global business focusing on the Pacific Rim.

We have set up production bases in China and Thailand and also sales bases in Canada. We have constructed a business network not only in Asia but also in the North American region. This network realizes speedy and reliable product supply and service to local customers just as with our domestic network.

Solution

Providing the best solutions through engineering and proposals.

Solving customer problems

In the fields of the manufacturing and housing, we hear such voices as “wanting to improve the working environment,” “wanting to promote energy savings and resource savings,” “wanting to use water resources effectively,” and “wanting to make living environments clean and comfortable.” TERAL’s proposals are actively developed and fine-tuned through full-use of its engineering know-how. We provide solutions that optimize to individual customer needs.

Supporting lifelines with trustworthy technologies.

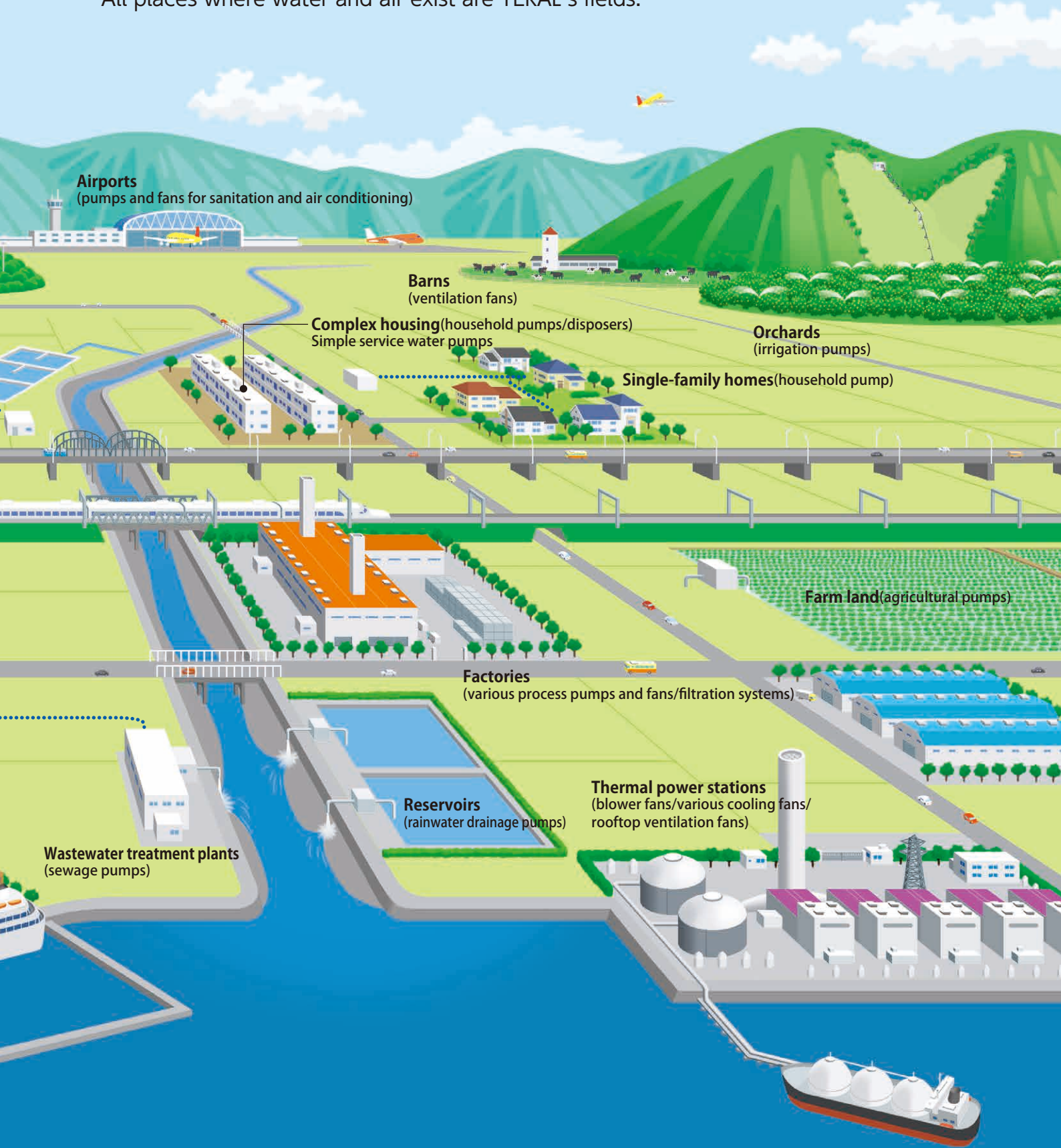


Pumps convey water and fans convey wind.

TERAL has expanded their uses by increasing value, such as increased efficiency, reduced size, unitized body, and multifunctionality, to simplify products.

As a result, TERAL brands play an active role in every facet of life.

All places where water and air exist are TERAL's fields.



Result

Proven trustworthiness of TERAL brands from long years experience

The power of TERAL brands includes a wide variety of pumps, fans, and unit products, and outstanding service and proposals.

Having earned recognition and support supported by many customers since its foundation, TERAL products have been adopted by major facilities and leading companies both overseas and domestically.

Amusement facilities

TERAL products have been adopted by theme and amusement parks, shopping centers, and health-related facilities such as spa resorts. We create water and air-based comfortable environments, and produce relaxation and enjoyment.



Government and public facilities

TERAL products also play an active role in central and local government buildings, halls, event sites, and other public facilities. Our results, requiring not only product quality but also technological capabilities and performance as a manufacturer, is proof of the credibility and reliability our customers place in TERAL.

POWER



Large-scale plants and industrial facilities

TERAL products are also active in various industrial fields, such as agriculture, fishery and livestock, and logistics, as well as large-scale plants such as factories and power plants. We offer contributions to improving productivity, making working environments comfortable, and moreover reducing costs.



Skyscrapers and intelligent buildings

TERAL products also play an active role in skyscrapers requiring high lift elevators and intelligent buildings where a high level of comfort is required in working and living environments. Our support covers operational supervision and emergency response 24 hours a day, every day.

Single-family homes and condominiums

The fields in which TERAL products are used are not limited to large-scale facilities. We deliver products for residential use represented by small pumps, disposers, and air-conditioning fans to homebuilders, developers, etc. We also contribute to making living environments comfortable.

THE STREAM



Sports facilities

Based on the know-how we have acquired in agricultural equipment, we are expanding into athletic field sprinkler systems, golf course green frost protection systems, etc. TERAL technologies can also be found in various sports facilities, such as pool water purification and circulation systems.

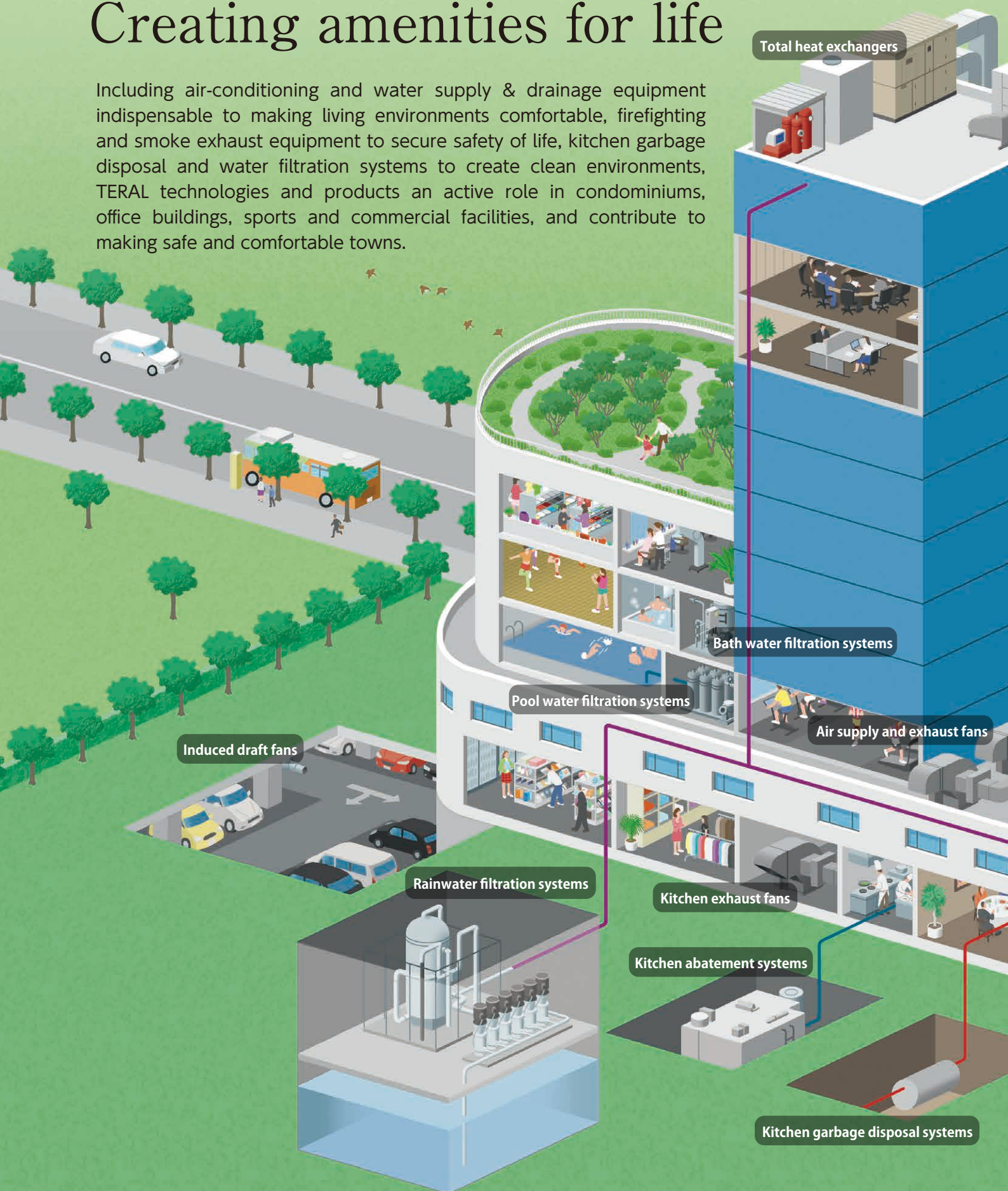


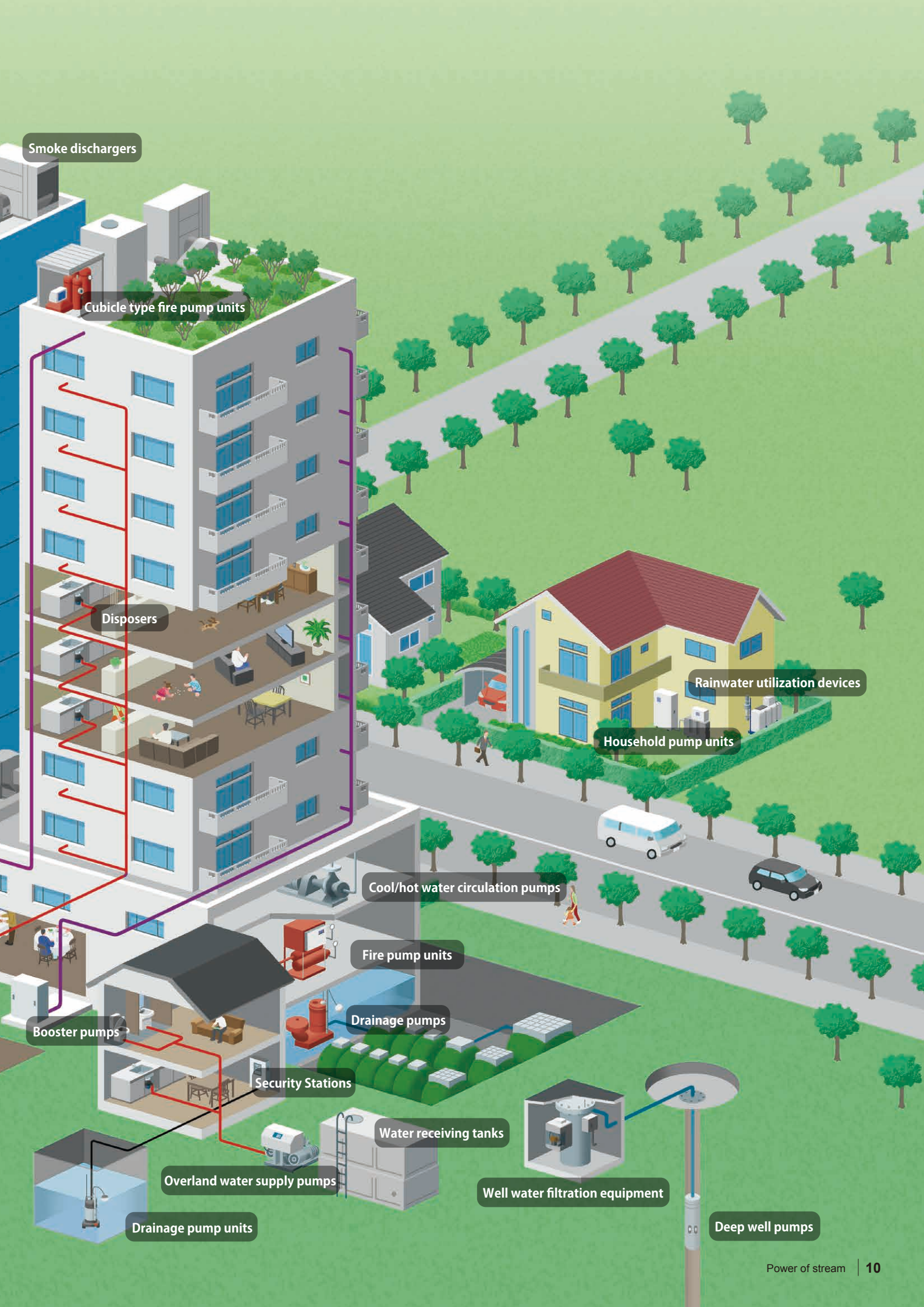
Overseas

TERAL products are active mainly in the Asian region: "Tansonnhat International Airport," Vietnam's international gateway, "Union Square," Hong Kong's new landmark, and other big name facilities, and also at local production bases of many Japanese companies.

Creating amenities for life

Including air-conditioning and water supply & drainage equipment indispensable to making living environments comfortable, firefighting and smoke exhaust equipment to secure safety of life, kitchen garbage disposal and water filtration systems to create clean environments, TERAL technologies and products an active role in condominiums, office buildings, sports and commercial facilities, and contribute to making safe and comfortable towns.





Smoke dischargers

Cubicle type fire pump units

Disposers

Rainwater utilization devices

Household pump units

Cool/hot water circulation pumps

Fire pump units

Drainage pumps

Booster pumps

Security Stations

Water receiving tanks

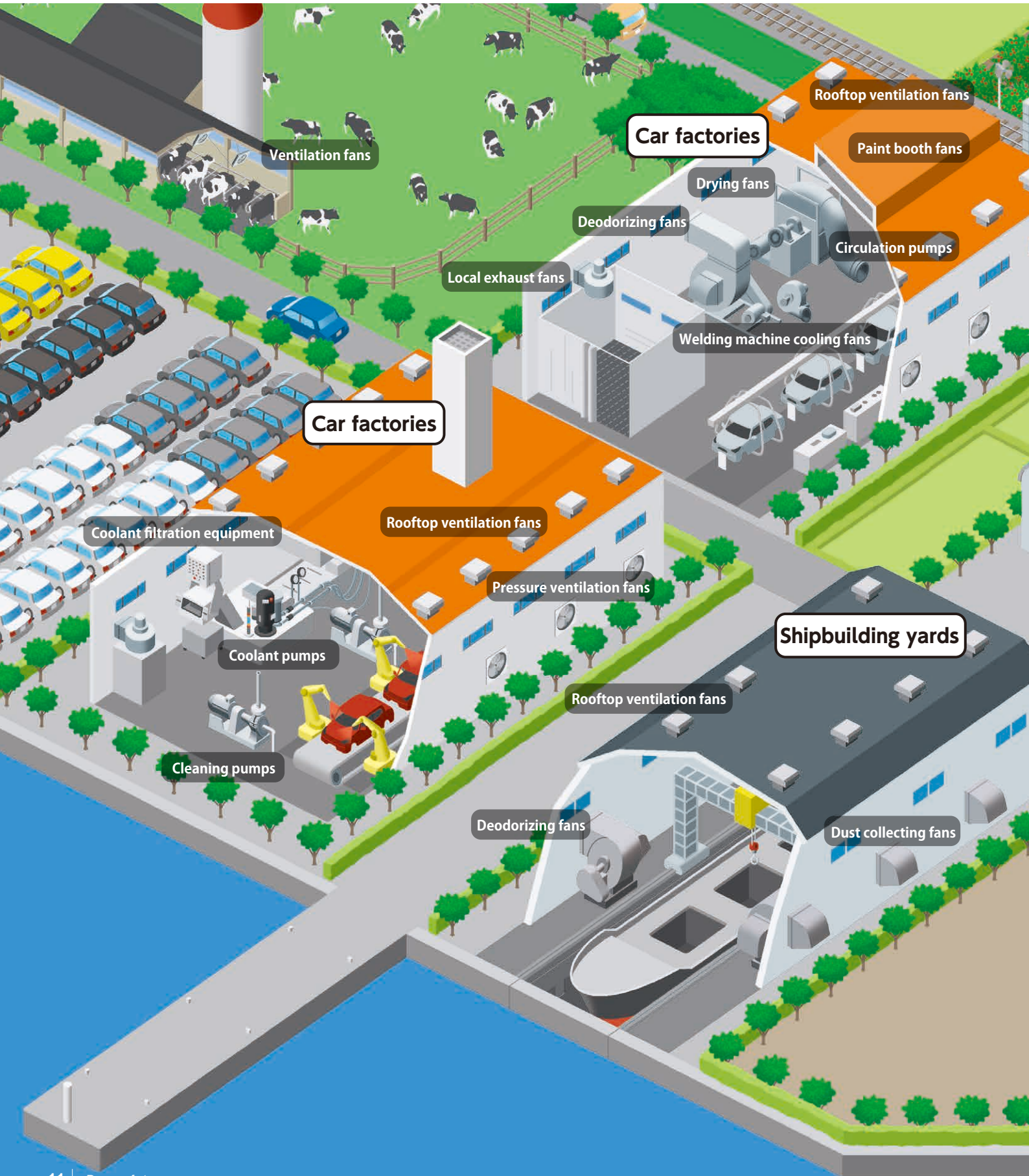
Overland water supply pumps

Well water filtration equipment

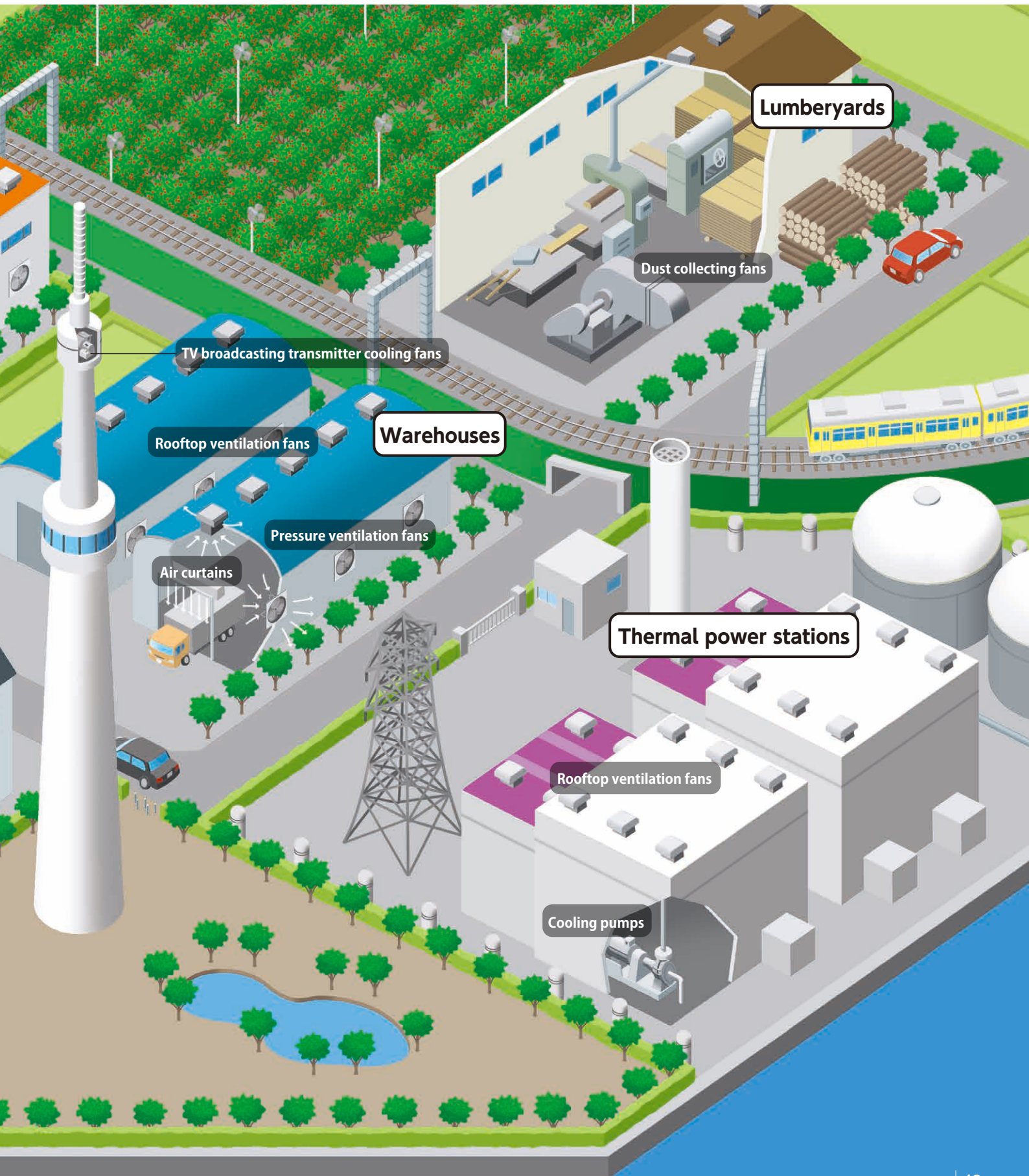
Drainage pump units

Deep well pumps

Promoting increase in efficiency of production activities.



In every field of production, there are demands for increased efficiency, energy savings, improved hygiene and sanitation, etc. TERAL develops diverse pumps and fans that meet high efficiency, energy saving, and low noise demands, and also high-value-added unit products. Staying active in factories and large-scale plants, agricultural and livestock industries, our pumps and fans contribute to increased efficiency in production and also improved environments at production sites and their surroundings.



Main products

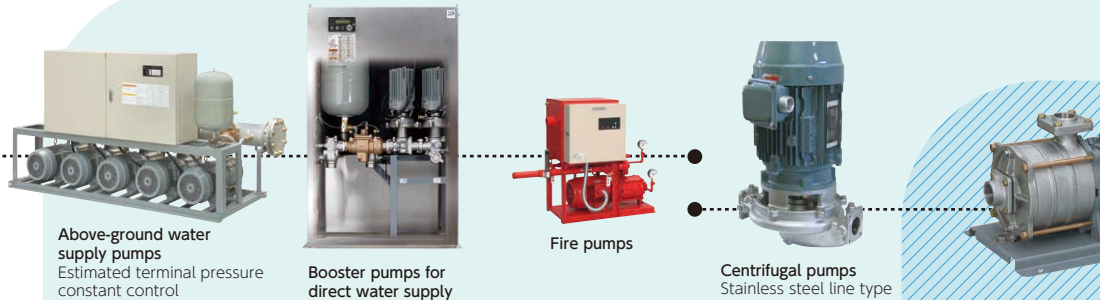
Extensive product lineup fitting diverse applications



For the building market

Water supply pumps/ Fire pumps

We support a safe and comfortable life with high-performance pumps of powerful, space-saving, and energy-saving designs with consideration given to superior durability and high workability.



Above-ground water supply pumps
Estimated terminal pressure constant control

Booster pumps for direct water supply

Fire pumps

Centrifugal pumps
Stainless steel line type

Submersible pumps

We provide a wide selection of fresh water pumps for pumping, deep wells, etc., and drainage pumps for rainwater, spring water, stagnant water at construction sites, septic tanks, etc.



Submersible drainage pumps
(for sewage and miscellaneous drainage)

Submersible drainage pumps
(for earth and sand water, and construction site drainage water)

Submersible freshwater pumps
Stainless steel

Deep well submersible pumps
Stainless steel

Deep well submersible pumps

Household pumps

We propose pumps for single-family homes and apartment and condominium housing in accordance with use and installation location, such as pumping water up from a well and applying pressure to tap water.



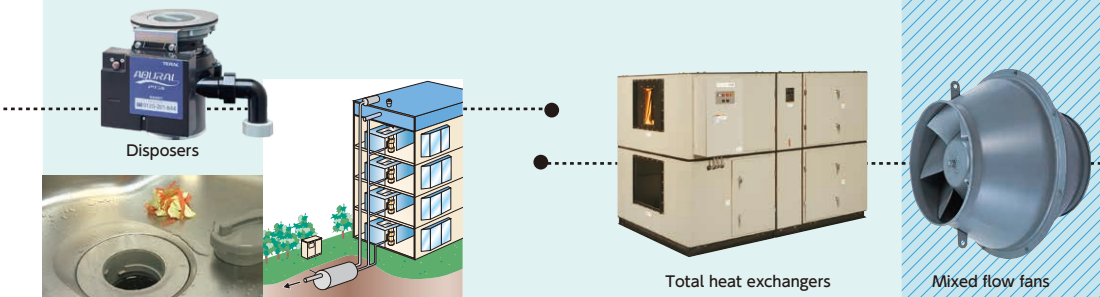
Shallow well pumps
Pressure tank type

Shallow well pumps
Constant pressure water supply type

Deep well submersible pumps

Kitchen garbage disposal systems

A disposer crushes kitchen garbage, which is purified in a treatment tank and discharged into a sewer. These systems are useful for sanitary living environments and environmental conservation.



Disposers

Total heat exchangers

Mixed flow fans

Filtration systems

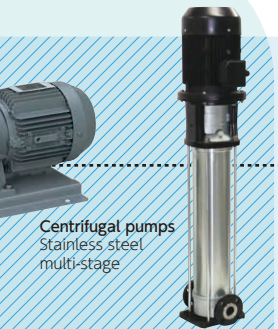
These systems contribute to promotion of a resource recycling-oriented society while being used for circulation in bathtubs, pools, and ponds, and for effective utilization of well water and rainwater, etc.



Filtration equipment
(for bath water filtration, amenity water filtration)

Filtration equipment
(for bath water filtration, pool water filtration, amenity water filtration)

For the industrial market



Centrifugal pumps
Stainless steel
multi-stage



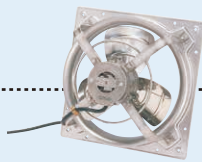
Centrifugal pumps
Vertical stainless steel
high-head multistage



Centrifugal pumps
Stainless steel



Coolant pumps
High head multi-stage
immersion type



Pressure fans
Stainless steel



Ring blowers



Direct driven type turbo fans

Above-ground pumps

High performance, compactness, and weight reduction are realized by the most up-to-date fluid design. Our product lineup offers models that can be selected in accordance with use from low to high lift.

Pumps and fans for industrial use

Actively used in every industrial field, including factory production facilities and incidental facilities, and equipment cooling. With powerful performance and high efficiency, these pumps and fans contribute to raising productivity and improving working environments.

Water
Power of
source of power is in the stream of water, wind,
Wind



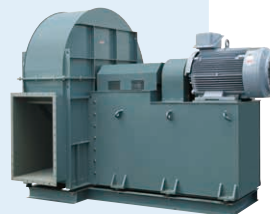
SF induced fans



Air curtains



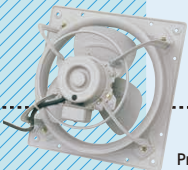
Big logs



Turbo fans
Direct-coupled type

Air-conditioning fans

Various types of large-sized fans for ventilation in large-scale commercial facilities, underground parking lots, and subway stations to small kitchen fans.



Pressure fans
(Exhaust type/air supply type)



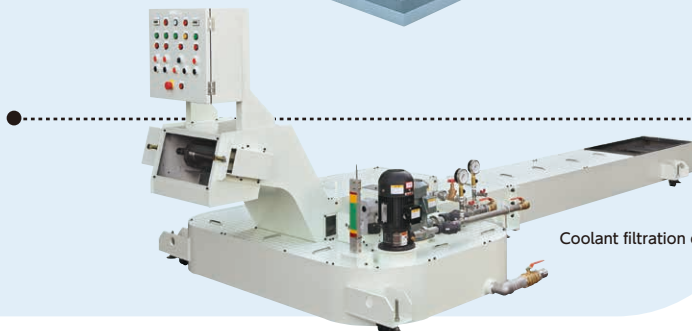
Rooftop ventilator

Coolant filtration system

Ideal flow of coolant is realized with an optimization-based tank design by three-dimensional flow analysis. The life of coolant is extended by enhancing filtration efficiency.



Sirocco fans



Coolant filtration equipment

Solutions

Supporting customers by proposals based on our unique technical capabilities and know-how.

1. Improvement in working environments

■ Improvement in operational efficiency by uniformity of compressor room temperatures through forced ventilation with induced draft fans.

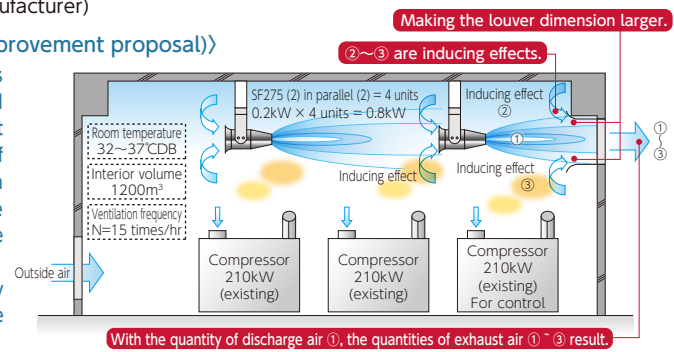
(Case example of delivery to an electrical equipment manufacturer)

〈Customer problem and request〉

Base operation was performed by two pneumatic compressors (210kW) and load fluctuations were controlled by another one. Even with outdoor ventilation, room temperature did not lower. Compressor performance deteriorated, and the working environment deteriorated at the same time.

〈TERAL's solution (improvement proposal)〉

The room temperature has been lowered by induced discharge of ascending hot air with the introduction of induced draft fans (two in parallel: four in total). The operational efficiency of the compressors has been increased to promote energy savings and also improve the working environment.



■ Creation of a safe and clean coating and polishing work environment by a vertical pull booth.

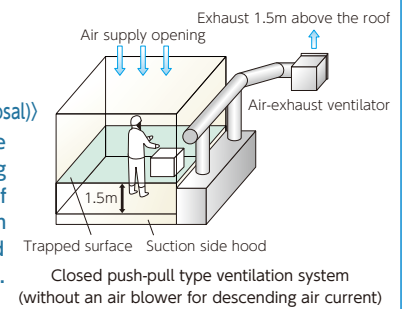
(Case example of delivery to a metal product manufacturer)

〈Customer problem and request〉

For installation of a new factory, there was a demand for a coating booth meeting such conditions as 1) compliance with the Industrial Safety and Health Act, Air Pollution Control Act, and Fire Service Act; 2) ventilation performance equivalent to push-pull type without using a push device, 3) alignment of the working floor surface with the floor line, and 4) ability to carry in members by using an overhead traveling crane.

〈TERAL's solution (new installation proposal)〉

We have proposed a unit type "vertical pull booth" eliminating hazardous substances outside of the booth by suctioning air from the open floor surface and producing a descending air current.



2. Effective use of water resources

■ Realization of clean and safe water quality management by developing a circulating filtration system for pool and bathing facilities.

(Case example of development of a circulating filtration system for pool and bathing facilities)

〈Customer problem and request〉

It was requested to increase operational efficiency by systematic implementation of appropriate water temperature control, water level control, and hygienic control as well as circulating filtration of pool, hot spring, and bathing facilities in series, and to reduce costs by effective use of water resources.

〈TERAL's solution (Case example of system development)〉

We have developed a "circulating filtration system" integrating heat exchange, drug injection, water level gauge, and other functions in addition to circulating filtration. We have also provided total support from design and construction through maintenance after introduction.

■ Promotion of recycling of daily living sewage and kitchen drainage as gray water.

(Case example of development of a gray water generation system)

〈Customer problem and request specification〉

It was requested to recycle sewage and drainage generated in large complex facilities, etc., by filtration to gray water: toilet flushing water and general service water.

〈TERAL's solution (Case example of system development)〉

We have developed a "gray water generation system" combining microbial treatment, sand filtration, etc. We have promoted the use of gray water by stable water treatment and contributed to reducing water charges.

■ Promotion of effective use of water resources by purifying well water and rainwater into industrial water and drinking water.

(Case example of development of a well water and rainwater filtration system)

〈Customer problem and request specification〉

Due to the increase in water charges in facilities consuming enormous amounts of water like a factory, it was requested to reduce costs and also enhance corporate image with effective use of well water and rainwater.

〈TERAL's solution (Case example of system development)〉

We have developed a "well water and rainwater filtration system" combining multiple filtration devices. We have proposed an optimum system according to the quality of raw water and the purpose of use.

TERAL not only simply develops, produces, and sells products, but also expands its reach to proposal activities to solve customer problems as sales, design & development, production, engineering, and support divisions work as one. We provide the best solution in accordance with each customer's needs, such as improvement in working environments at production sites and energy savings.

3. Promotion of energy savings and resource savings

■ **Realization of extending the life of coolant by independently developing coolant filtration equipment.**

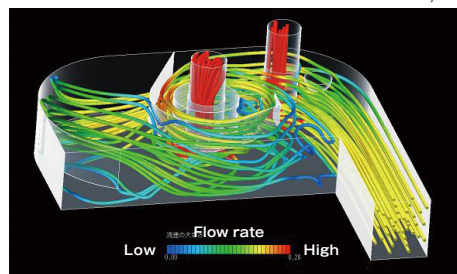
(Case example of development of a new product for a manufacturer (processes of grinding, coating, etc.))

〈Customer problem and request〉

It was needed to frequently replace filters and coolant because of the large amount of mixing of impurities, such as sludge and oil, into coolant in the processes of grinding, coating, etc. The availability factor of machine tools was low, which was inefficient.

〈TERAL's solution (improvement proposal)〉

In order to meet diverse customer needs, we have developed two types of coolant filtration equipment: drum filter type and cyclone type by using our own coolant pump know-how, three-dimensional flow analysis, etc.

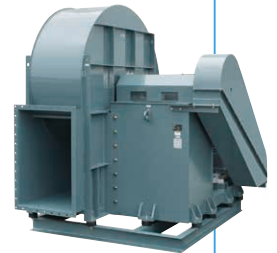


■ **Contribution to reducing running costs and CO₂ emissions by proposing multifaceted energy-saving measures related to air blowers.**

(Case example of energy-saving proposal with air blowers)

〈Customer problem and request〉

The operating time of air blowers having been introduced in factories, large facilities, apartment and condominium housing, etc., was long, performance tended to deteriorate and running costs increased over time.



〈TERAL's solution (improvement proposal)〉

- Energy savings by high-efficiency air blowers
- Energy savings by inverter control
- Optimum energy savings proposal for existing facilities

■ **Realization of stabilization and increase in efficiency of pump operation by unit number control of water supply pumps in apartment and condominium housing.**

(Case example of renewal of water supply pumps in apartment and condominium housing)

〈Customer problem and request〉

While a large system of two tap water supply pumps (5.5kW) was in operation for apartment and condominium housing (apartment complex), water pressure decreased during the time when the tap usage rate increased. Also, electric power costs increased due to constant operation. It was requested to control operation according to the tap usage rate.

■ Existing water supply pumps (5.5kW × 2)



〈TERAL's solution (improvement proposal)〉

We have proposed unit number control of three estimated terminal pressure constant water supply units "NX-65VFC (3.7kW)" and 24-hour emergency response from the perspective of maintenance.

4. Improvement in living environments

■ **Contribution to making living environments comfortable by developing a kitchen garbage disposal system based on disposers.**

(Case example of development of a kitchen garbage disposal system using disposers)

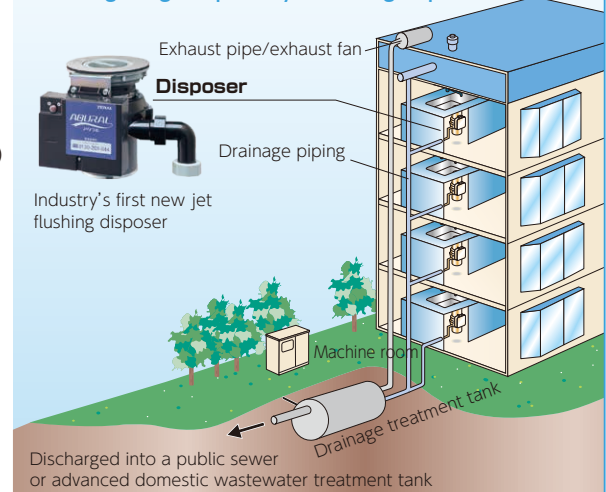
〈Customer problem and request〉

It was requested to create clean living environments with consideration given to the life of residents and their surrounding environments by reducing kitchen garbage accounting for about 40% of household waste in large apartment and condominium housing.

〈TERAL's solution (Case example of system development)〉

We have developed a "kitchen garbage disposal system using disposers," in which a disposer installed under the sink in each household crushes kitchen garbage and the drainage purified in a treatment tank is discharged into a sewer.

Kitchen garbage disposal system using disposers



Production system

Production system established in pursuit of quality, delivery time, and efficiency.

TERAL entered the NPS (New Production System) Research Society in January 1999, and we have established our own production system by improving conventional production methods under guidance from the Society. It is not only to simply improve production lines but also to unify the management of information through an organic cooperative effort of order-receiving, quality control, shipment, and other operations divisions. This eliminates all waste in each process, and realizes high quality, quick delivery, and cost reductions.



1 Order fulfillment

TERAL's production system is controlled as a "refined stream" starting with order-receiving operations. At the site of order fulfillment, desk layout and personnel distribution are planned and implemented, and personnel are assigned to production sites and schedules are managed according to customer needs with the introduction of our uniquely developed production site "load management system."

■ In-line order-receiving work

Desks are laid out in a row from one manufacturing item to the next. By flowing processed information to the next desk, wasted staff motion and mistakes in information communication are eliminated.

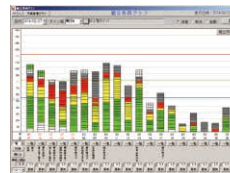
■ Design to order by CAD

We offer customization by individual design with the use of CAD in the case where there is a need for design change due to order conditions.



■ Load management system

We realize optimization of personnel assignment according to delivery time by visualizing the load status of production sites and intuitively understanding the information.



■ Work instructions

After completion of order fulfillment, "work instructions" are prepared and passed to production sites.



2 Machining process

Uniformity of quality and shortening of machining times are realized by standardization of parts and machining methods and also precision work in units of 1/100 to 1/1000 millimeters by means of dedicated machining facilities. Also, 100% inspections are performed visually and by using inspection devices to ensure quality.

■ Laser beam machine



■ Spinning machine

Self-developed and manufactured dedicated machining equipment and facilities serve an important role.



■ Welding

Members requiring accuracy are hand-welded. For large-sized members, automatic welding machines and manual work (fine adjustment) are combined to improve work efficiency.



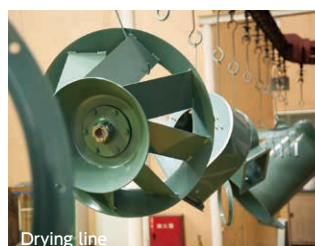
3 Coating process

For the majority part of TERAL products, eco-friendly and high-film-performance powder paints are adopted. A series of processes from pretreatment of objects to be coated, coating, baking & drying, through cooling is automated.

■ Powder coating line



Spray coating in a booth



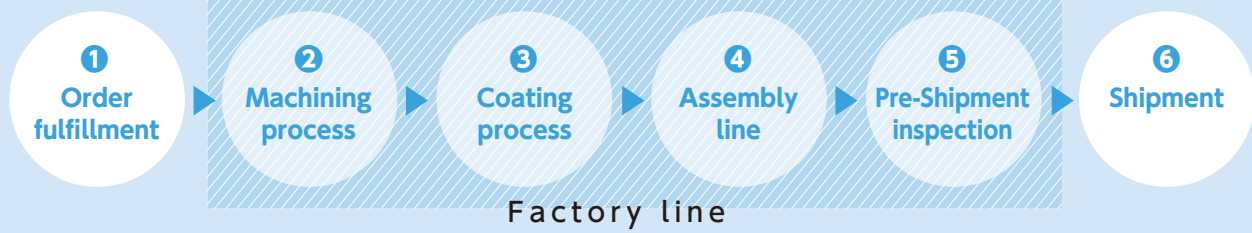
Drying line

■ Balance inspection

For the parts of rotating bodies, such as fans, balance inspection is performed after completion of coating, and if any defect is found, fine adjustment is made on the spot.



TERAL's production system



4 Assembly line

In order to meet individual needs, assembly work is carried out in flexible human lines. Not only a single product but also small batches of a variety of products can be produced. We are striving to achieve high-quality, high accuracy and high efficiency on a daily basis by pursuing optimal production for the entire plant.

■ Integrated production of advanced skills and electronic information

Manufacturing of high quality products is realized through assembly skills by experts and the use of electronic information.



Assembly instruction

■ Stable production through monitoring

Production status on the assembly line is also checked by a remote monitor to prevent production delays.



Progress management

■ Systematic judgement of inspection outcomes

Through pass/fail judgment using tablets, human error in judgment and prevention of outflow of defective products are realized.



Inspection judgement

■ Quality improvement by utilizing accumulated data

Accumulated inspection data is utilized for further quality improvement and performance improvement.



Inspection record

Factory intelligent system for TERAL



FiT

5 Pre-shipment inspection

In addition to quality inspection in every process, full inspection such as operation are implemented prior to shipment. We will further improve the reliability of our products through the introduction of factory IT, and improve quality through the use of accumulated data.

6 Shipment

In order to strictly observe the customer-requested delivery time, thoroughly planned location areas and shipment freight.

■ Shipment management according to arrival time



■ Cargo arranging place management

Smooth loading and on-time departure are realized by managing cargo arrangement by shipment location area.



■ Cargo arranging place

At the loading yard, smooth loading is realized by cargo arrangement by truck and shipment address.



Quality control system

Strictly checking production processes and products taking an uncompromising stance on quality.

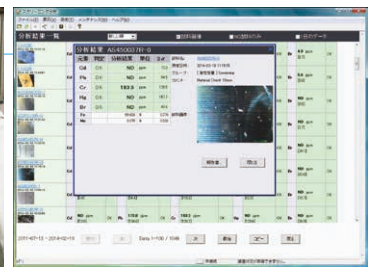
Since our foundation, TERAL has continuously maintained an uncompromising stance on quality as a policy. It is our attitude of not only simply ensuring the performance and operation of products but also meeting all customer needs, such as delivery time, service, and reduction in environmental loads.

The quality assurance department closely cooperates with production and other divisions, and at the same time, promotes quality improvements by requesting each division make improvements upon receiving feedback from customers. Also, in conjunction with 100% inspections at production sites, performance tests of products, etc., are also carried out at the request of customers. Therefore, various inspection devices have been introduced in-house.

[Contained substance inspection]

Incoming parts and materials are strictly checked by using fluorescent X-ray inspection equipment for the six hazardous substances* specified in the RoHS Directive exceeding the specified values.

*Six specified substances: Lead, mercury, cadmium, hexavalent chromium, polybrominated biphenyl (PBB), polybrominated diphenyl ether (PBDE)



[Pump test]

Pump performance is tested by actually pumping water up from the underground pool installed in-house. Since various data obtained are displayed on mobile devices, real-time data can be quickly understood while the product being tested is in operation.



[Air blower test]

The performance of all products from small to large fans can be tested. Quantities of air, static pressure, etc., are automatically measured on a computer. By measuring not only the performance but also noise and vibration etc., we provide products that meet customer-requested strict environmental conditions.



TERAL's quality policy

Devoting all our energies to manufacturing products in response to customer-expected quality

1. We will always enhance developmental capabilities and realize advanced customer needs.
1. We will always supply products of stable quality and earn customer trust and customer satisfaction.
1. We will always keep in mind spiraling-up of quality and never fail to strive for this on a daily basis.

Research and development system

Proactively conducting research and development activities to create next-generation TERAL products.

Needs involving pumps and fans are becoming increasingly sophisticated and diversified more including efficiency, lower noise, energy savings, ruggedization, weight reduction, and compactness. In order to respond to such trends of the times, TERAL has proactively conducted research and development activities in cooperation with various research institutions and universities. The research and development division of the engineering department promotes product development for the next generation by performing structural analysis and flow analysis with the use of leading-edge measuring equipment, etc.

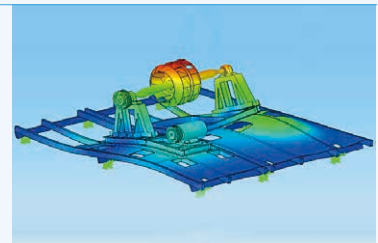
【 Research and development building of the engineering department 】

TERAL's research and development base is engaged in basic research for next-generation products, structural design, fluid design, making and verification of trial models, etc.



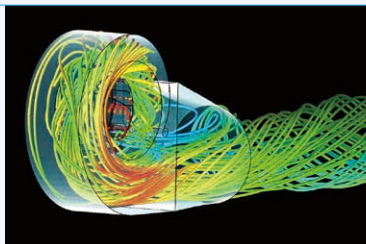
【 Structural analysis 】

Stress, deformation, and other factors exerted on members are simulated by using leading-edge analysis software to carry out secure and optimum structural design.



【 Flow analysis 】

Flows of water and air of virtually designed products are analyzed to carry out ideal fluid design low in noise and vibration. High efficiency is incorporated into products.



【 Three-dimensional printer 】

Design drawings of theoretically optimized parts are mocked up to the printer. These are assembled to make trial models.



【 Three-dimensional measuring equipment (floor-standing type) 】

The measuring equipment is of a contact type that actually measures the sizes of intricately-shaped parts and products with high accuracy.



【 Three-dimensional measuring equipment (arm type) 】

Compact measuring equipment having a multijoint arm can measure the sizes of intricately-shaped parts in greater detail in a noncontact manner.



【 Actual load measurement tests of motors 】

Performance, durability, noise, heat generation, etc., are verified on the assumption of operational environments of prototyped motors.



【 Anechoic chamber 】

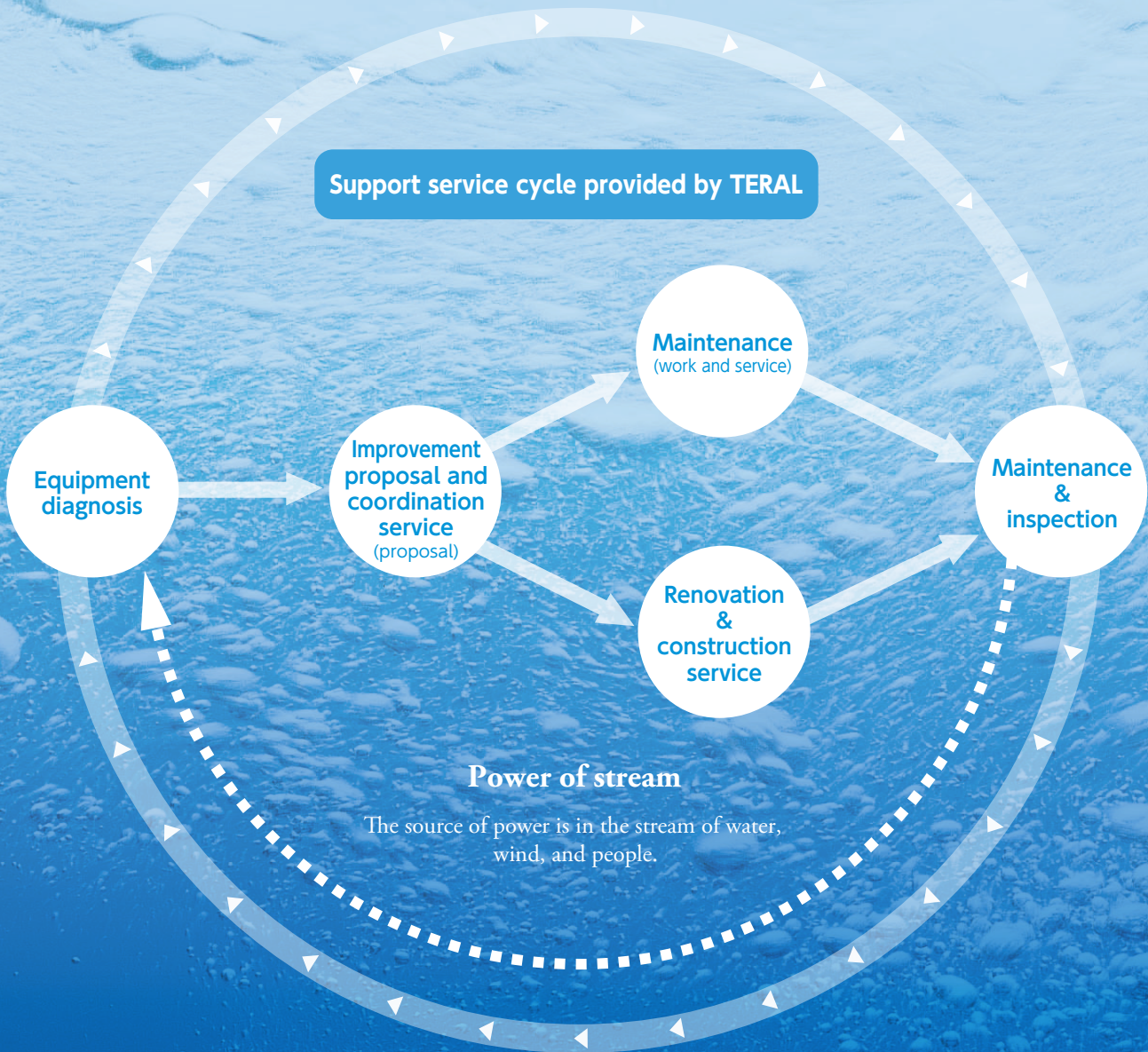
Product precision noise levels are measured in an anechoic chamber.



Support service

Supporting customers by providing continual and multilateral service

In order to support our safe and comfortable life every day and to support safe and efficient production activities, various water supply & drainage systems and air-conditioning systems are continuously operated all around us 24 hours a day. To support their stable operation, TERAL offers multifaceted support services not only for our own products but also for multi-vendor products. We provide optimum service in every scene during the lifecycle of each product with the use of agile footwork, superior technological capabilities, and many years of accumulated advanced know-how in the field of pumps and fans.



Equipment diagnosis

With the passage of time, all facilities or equipment may create a phenomenon where performance deteriorates or power consumption rises even when in operation. TERAL offers diagnostic services for facilities and equipment.

Improvement proposal and coordination service

Based on the results of equipment diagnosis, if a problem is detected, we propose optimum improvement measures from the customer's standpoint. Also, in the case of requiring renovation work, we support each customer's smooth business continuity by preparing replacements until equipment renovation and coordinating schedule management, etc.



Maintenance

If it is judged that with a problem can be solved by cleaning the inside of equipment, replacing parts, making repairs, etc., we perform appropriate maintenance according to circumstances. We support economical, stable operation of customer devices and systems with a prompt response.



Renovation & construction service

We also offer extensive renovation and construction, including renewal of aging water pipes, upgrade of direct-coupled booster water supply systems, renovation of exhaust air ducts, and replacement of large fans according to the results of diagnosis and at each customer's request. We provide prompt and reliable services through full use of leading-edge technologies and advanced know-how.



Maintenance & inspection

Even after completion of repair or renovation & construction of equipment and devices, TERAL performs continuous maintenance inspection. In particular, periodic maintenance inspection is required for lifelines of offices, apartments and condominiums, etc., and facilities and systems related to important infrastructures of factories, etc.

Package of remote monitoring and 24-hour emergency response

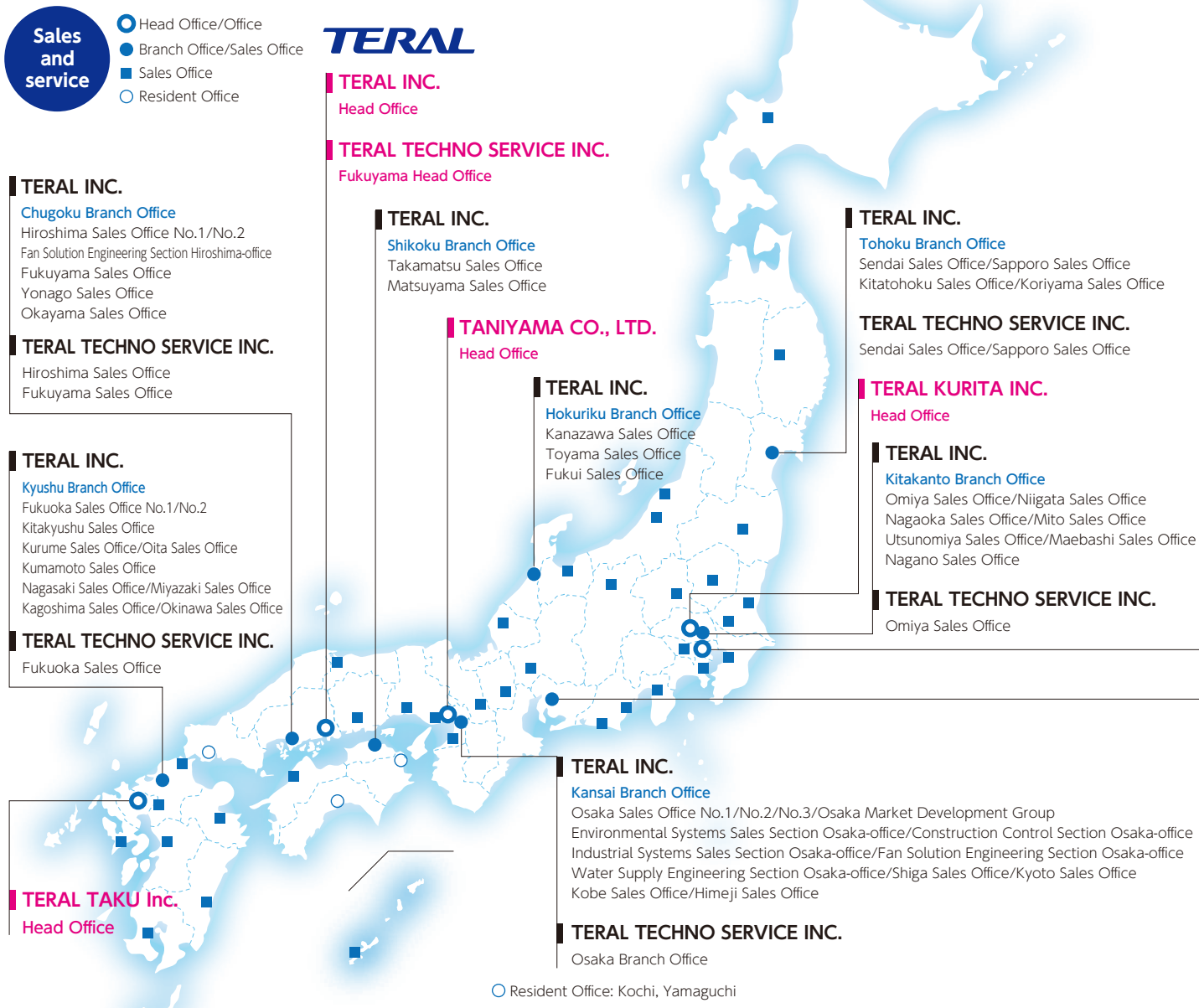
■TECS (TERAL emergency response system)

TERAL has established an emergency service system to respond to receiving notification 24 hours a day, every day with the introduction of an unattended remote monitoring system that automatically alerts the monitoring center of any abnormality in equipment, when sensed. In the event of any unexpected trouble, we deliver safety and security to customers with a prompt response.





*A service agreement with TERAL Technoservice Inc. is required.



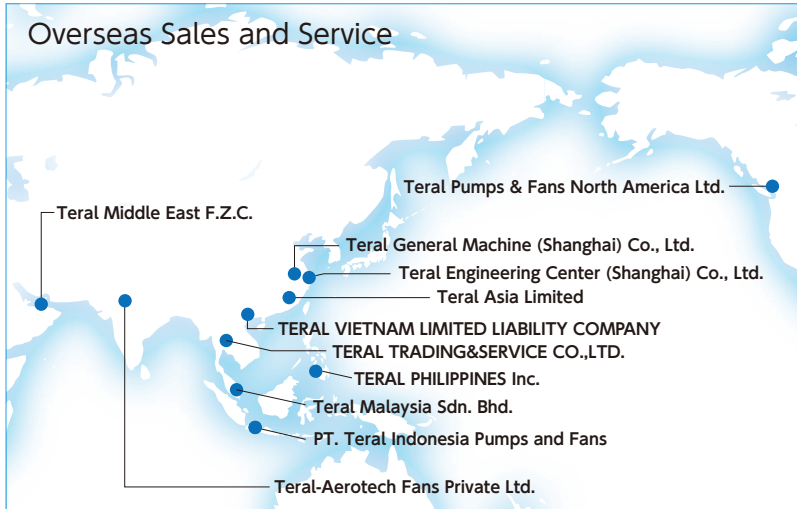
TERAL's network



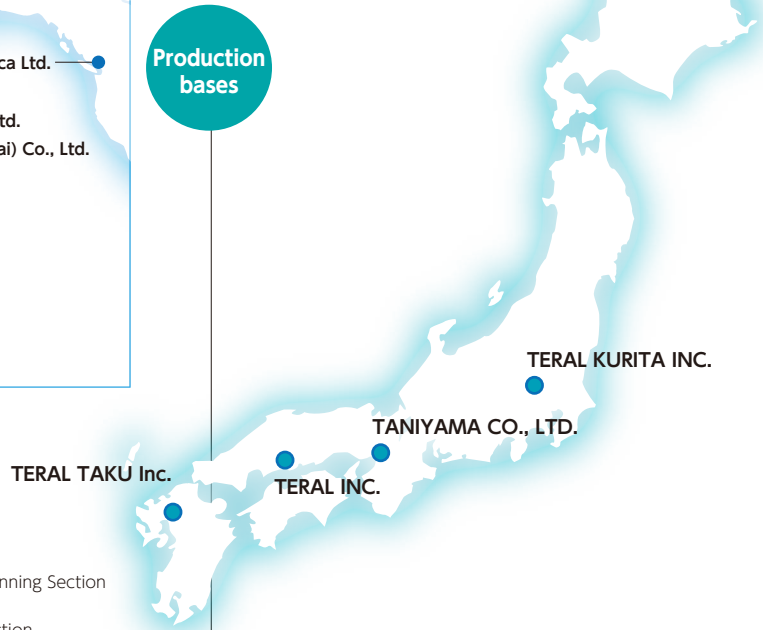
Group companies in Japan

<p>TERAL TECHNO SERVICE INC.</p>  <p>Maintenance & engineering</p> <p>The company is an engineering group that is engaged in 24-hour response support services, maintenance, execution of work, up to system design of plants.</p>	<p>TERAL TAKU Inc.</p>  <p>Production of small pumps and equipment-installed pumps</p> <p>The company produces the household pumps "KEGON series" and "N series" and other small pumps such as coolant pumps and equipment-installed pumps from motors to control equipment.</p>	<p>TERAL KURITA INC.</p>  <p>Production of fans for industrial use, facilities, and agricultural use</p> <p>The company produces pressure ventilation fans, axial fans, and rooftop ventilation fans, and also made-to-order products for specific uses. By applying these technologies, the company also produces fans for cooling, dehumidification, and drying systems.</p>	<p>TANIYAMA CO., LTD.</p>  <p>Production of fans for industrial use, construction works, and air-conditioning</p> <p>The company produces centrifugal and axial air blowers and various fans that meet diverse needs. The company offers a wide range of uses, such as government facilities, power-generating and various manufacturing industries, and tunnel construction.</p>
---	---	--	--

Overseas Sales and Service



Production bases



TERAL INC.

Tokyo Office

Sales Planning Section/Overseas Business Planning Section
 Industrial Systems Sales Section No.1/No.2 Tokyo-office
 Environmental Systems Sales Section No.1/No.2/No.3 Tokyo-office
 Environmental Market Development Section
 Construction Control Section No.1/No.2 Tokyo-office/Construction Planning Section
 Fan Solution Engineering Section/Water Supply Engineering Section
 Environmental Conservation Engineering Section/Sales Engineering Section

Tokyo Branch Office

Tokyo Sales Office No.1/No.2/No.3/ Tokyo Market Development Section
 Tachikawa Sales Office/Chiba Sales Office/Yokohama Sales Office

TERAL TECHNO SERVICE INC.

Tokyo Head Office/Yokohama Branch Office/Chiba Sales Office

TERAL INC.

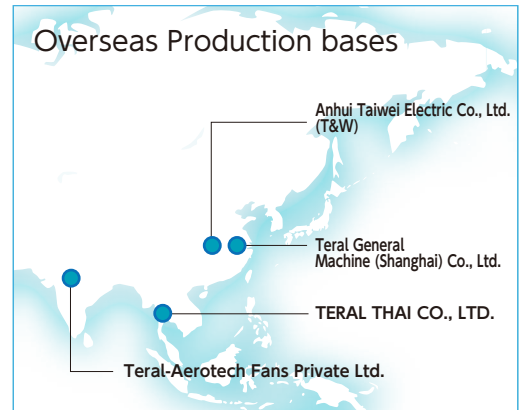
Chubu Branch Office

Nagoya Sales Office
 Environmental Systems Sales Section Nagoya-office
 Industrial Systems Sales Section Nagoya-office
 Fan Solution Engineering Section Nagoya-office
 Shizuoka Sales Office/Numazu Sales Office/Hamamatsu Sales Office/Gifu Sales Office

TERAL TECHNO SERVICE INC.

Nagoya Branch Office

Overseas Production bases



Group companies

Teral Asia Limited



Strategic base in Hong Kong for the world market

The company is engaged in marketing, sales strategies, etc., in the world market, serving as the nerve center of global business in the TERAL group. (Established in March 2011)

TERAL THAI CO.,LTD.



Manufacturing and sales base in Southeast Asia

As its head office is placed in Thailand (Ayutthaya), this locally-incorporated company is engaged in manufacturing and sales of water treatment and air-conditioning equipment mainly for Southeast Asia. (Established in November 1991)

Teral General Machine (Shanghai) Co., Ltd.



Manufacturing and sales of stainless steel pumps

The company is engaged in sales of TERAL products as well as design and manufacturing of stainless steel pumps, water supply devices, and air blowers for the Chinese and Japanese markets. (Established in November 2002)

Anhui Taiwei Electric Co., Ltd. (T&W)



Manufacturing and sales of high-quality motors

The company is a joint venture with a Chinese manufacturer engaged in manufacturing of motors from 0.2kW to 90kW by combining Chinese productivity and Japanese quality control. (Established in June 2009)

Company overview

Company name	TERAL INC.	Executives	<p>President Hirofumi Sugata</p> <p>Executive Vice-president and COO Takayuki Sugata</p> <p>Senior Managing Director Teizo Fujii</p> <p>Senior Managing Director Tadamichi Murakami</p> <p>Managing Director Toshiki Katayama</p> <p>Director of Technical Headquarters Masaaki Sekimoto</p> <p>Director Kazue Sugata</p> <p>Director Yoshiko Takemoto</p> <p>Auditor Yoshio Morioka</p> <p>Auditor Koichi Aki</p> <p>Auditor Yoichi Miyazawa</p> <p>Executive Officer Satoshi Wakabayashi</p> <p>Executive Officer Kenji Takahashi</p> <p>Executive Officer Yasuhiko Oshima</p>
Head office	230 Moriwake, Miyuki-cho, Fukuyama City, Hiroshima 720-0003, Japan		
Founded	August 1918		
Established	April 14, 1950		
Representative	Hirofumi Sugata		
Capital	78 Million JPY		
Products and Services	Sales and production of pumps, air blowers, water supply devices, filtration devices, kitchen garbage disposal systems, total heat exchangers, disaster-prevention equipment, environment-related equipment, and other related equipment, and construction of environmental facilities	Group companies in Japan	<p>TERAL HOLDINGS INC.</p> <p>TERAL TECHNO SERVICE INC.</p> <p>TERAL TAKU Inc.</p> <p>TERAL KURITA INC.</p> <p>TANIYAMA CO., LTD.</p>
Factories	<ul style="list-style-type: none"> • Main factory (230 Moriwake, Miyuki-cho, Fukuyama City, Hiroshima 720-0003, Japan) • Taku factory (3898 Nagao Minamitaku-machi, Taku City, Saga 846-0023, Japan) • Kurita-Kitamoto factory (2-101 Arai, Kitamoto City, Saitama 364-0026, Japan) • Taniyama factory (18 Kitahatsushimacho, Amagasaki City, Hyogo 660-0834, Japan) 	Overseas group companies	<p>Teral Asia Limited</p> <p>Teral Engineering Center (Shanghai) Co., Ltd.</p> <p>TERAL THAI CO., LTD.</p> <p>TERAL TRADING & SERVICE CO., LTD.</p> <p>Teral General Machine (Shanghai) Co., Ltd.</p> <p>Anhui Taiwei Electric Co., Ltd. (T&W)</p> <p>Teral Pumps & Fans North America Ltd.</p> <p>Teral Middle East F.Z.C.</p> <p>TERAL VIETNAM LIMITED LIABILITY COMPANY</p> <p>Teral Malaysia Sdn. Bhd.</p> <p>PT. Teral Indonesia Pumps and Fans</p> <p>Teral-Aerotech Fans Private Ltd.</p> <p>Teral Philippines Inc.</p>
Branch offices	Tokyo Office, 9 Branches, 51 Sales Offices		
Employees	885 (group's total: Appx 1,500)		
Banks	The Hiroshima Bank, Ltd., Mizuho Bank, Ltd., The Chugoku Bank, Ltd., MUFG Bank, Ltd., Sumitomo Mitsui Banking Corporation, The Yamaguchi Bank, Ltd., Sumitomo Mitsui Trust Bank, Limited.	Contractor licenses	<p>The Minister of Land, Infrastructure, Transport and Tourism Licenses</p> <p>Installation and Construction of Machinery and Equipment Contractor:</p> <p>Genral-4 No. 10446</p> <p>General Civil Engineering Contractor: Special-4 No. 10446</p> <p>Plumbing Construction Contractor: Special-4 No. 10446</p> <p>Electrical Construction Contractor: Genral-4 No. 10446</p> <p>Water Well Drilling Construction Contractor: Genral-4 No. 10446</p>
Sales	33,300 Million JPY (2022 fiscal year)		
Consolidated sales (domestic and overseas with capital ties)	48,000 Million JPY (2022 fiscal year)		

TERAL

“TERAL” is a coined word from “terra (Latin),” meaning the Earth, and “rally (English)” meaning revival.

In other words, TERAL’s mission is “to revive the Earth with air and water.”

TERAL group's after-sales service network

TERAL INC.	Head Office	230 Moriwake, Miyuki-cho, Fukuyama City, Hiroshima	〒720-0003	TEL.084-955-1111	FAX.084-955-5777	
	Tohoku Branch Office					
	Sendai Sales Office	39-25 Ichō-machi, Miyagino-ku, Sendai City, Miyagi	〒983-0047	TEL.022-232-0115	FAX.022-238-9248	
	Sapporo Sales Office	23-1-3 Kita-juichijō-nishi, Chuo-ku, Sapporo City, Hokkaido	〒060-0011	TEL.011-644-2501	FAX.011-631-8998	
	Kitatohoku Sales Office	2-12-27 Tsuchidaminami, Morioka City, Iwate	〒020-0839	TEL.019-601-8818	FAX.019-601-8818	
	Koriyama Sales Office	1-13-9 Shima, Koriyama City, Fukushima	〒963-8034	TEL.024-922-5122	FAX.024-922-4226	
	Kitakanto Branch Office					
	Omiya Sales Office	2-1018-2 Owada-cho, Minuma-ku, Saitama City, Saitama	〒337-0053	TEL.048-681-7822	FAX.048-681-7082	
	Niigata Sales Office	5-6-21 Yamafutatsu, Chuo-ku, Niigata City, Niigata	〒950-0922	TEL.025-287-5032	FAX.025-287-3719	
	Nagaoka Sales Office	3-1-21 Miyazeki, Nagaoka City, Niigata	〒940-2021	TEL.0258-29-1725	FAX.0258-29-2369	
	Mito Sales Office	4-2-16 Shiraiume, Mito City, Ibaraki	〒310-0804	TEL.029-224-8904	FAX.029-231-4044	
	Utsunomiya Sales Office	3333-18 Tsuruta-machi, Utsunomiya City, Tochigi	〒320-0851	TEL.028-346-3400	FAX.028-346-9432	
	Maebashi Sales Office	84-3 Motosojo-machi, Maebashi City, Gunma	〒371-0846	TEL.027-253-0262	FAX.027-253-0278	
	Nagano Sales Office	401-1-3, Oaza Minamihori, Nagano City, Nagano	〒381-0016	TEL.026-243-2860	FAX.026-243-2861	
	Tokyo Branch Office					
	Tokyo Sales Office No.1	Terak Koraku Building, 2-3-27 Koraku, Bunkyo-ku, Tokyo	〒112-0004	TEL.03-3818-7769	FAX.03-3818-6763	
	Tokyo Sales Office No.2	Terak Koraku Building, 2-3-27 Koraku, Bunkyo-ku, Tokyo	〒112-0004	TEL.03-3818-6752	FAX.03-3818-6763	
	Tokyo Sales Office No.3	Terak Koraku Building, 2-3-27 Koraku, Bunkyo-ku, Tokyo	〒112-0004	TEL.03-5684-0238	FAX.03-5684-0218	
	Tokyo Market Development Section	Terak Koraku Building, 2-3-27 Koraku, Bunkyo-ku, Tokyo	〒112-0004	TEL.03-3818-6846	FAX.03-3818-6763	
	Tachikawa Sales Office	3-32-9 Saiwai-cho, Tachikawa City, Tokyo	〒190-0002	TEL.042-536-2714	FAX.042-538-7080	
	Chiba Sales Office	4-13-8, Suehiro, Chuo-ku, Chiba City, Chiba	〒260-0843	TEL.043-264-5252	FAX.043-226-7353	
	Yokohama Sales Office	Technowave 100 10F, 1-1-25 Shinurashima-cho, Kanagawa-ku, Yokohama City, Kanagawa	〒221-0031	TEL.045-450-5351	FAX.045-450-5352	
	Tokyo Office					
	Sales Planning Section	Terak Koraku Building, 2-3-27 Koraku, Bunkyo-ku, Tokyo	〒112-0004	TEL.03-3818-7700	FAX.03-3818-6790	
	Overseas Business Planning Section	Terak Koraku Building, 2-3-27 Koraku, Bunkyo-ku, Tokyo	〒112-0004	TEL.03-3818-7700	FAX.03-3818-6790	
	Industrial Systems Sales Section No.1 Tokyo-office	Terak Koraku Building, 2-3-27 Koraku, Bunkyo-ku, Tokyo	〒112-0004	TEL.03-3818-8101	FAX.03-3818-6798	
	Industrial Systems Sales Section No.2 Tokyo-office	Terak Koraku Building, 2-3-27 Koraku, Bunkyo-ku, Tokyo	〒112-0004	TEL.03-5805-1311	FAX.03-3818-6798	
	Environmental Systems Sales Section No.1 Tokyo-office	Terak Koraku Building, 2-3-27 Koraku, Bunkyo-ku, Tokyo	〒112-0004	TEL.03-3818-7800	FAX.03-3818-5031	
	Environmental Systems Sales Section No.2 Tokyo-office	Terak Koraku Building, 2-3-27 Koraku, Bunkyo-ku, Tokyo	〒112-0004	TEL.03-3818-7766	FAX.03-3818-5031	
	Environmental Systems Sales Section No.3 Tokyo-office	Terak Koraku Building, 2-3-27 Koraku, Bunkyo-ku, Tokyo	〒112-0004	TEL.03-3818-7800	FAX.03-3818-5031	
	Environmental Market Development Section	Terak Koraku Building, 2-3-27 Koraku, Bunkyo-ku, Tokyo	〒112-0004	TEL.03-3818-6846	FAX.03-3818-5031	
	Construction Control Section No.1/No.2 Tokyo-office	Terak Koraku Building, 2-3-27 Koraku, Bunkyo-ku, Tokyo	〒112-0004	TEL.03-3818-7764	FAX.03-3818-6437	
	Construction Planning Section	Terak Koraku Building, 2-3-27 Koraku, Bunkyo-ku, Tokyo	〒112-0004	TEL.03-3818-7133	FAX.03-3818-5031	
	Fan Solution Engineering Section	Terak Koraku Building, 2-3-27 Koraku, Bunkyo-ku, Tokyo	〒112-0004	TEL.03-3818-7133	FAX.03-3818-5031	
	Water Supply Engineering Section	Terak Koraku Building, 2-3-27 Koraku, Bunkyo-ku, Tokyo	〒112-0004	TEL.03-3818-7133	FAX.03-3818-5031	
	Environmental Conservation Engineering Section	Terak Koraku Building, 2-3-27 Koraku, Bunkyo-ku, Tokyo	〒112-0004	TEL.03-3818-7133	FAX.03-3818-5031	
	Sales Engineering Section	Terak Koraku Building, 2-3-27 Koraku, Bunkyo-ku, Tokyo	〒112-0004	TEL.03-3818-7133	FAX.03-3818-5031	
	Hokuriku Branch Office					
	Kanazawa Sales Office	2-18 Matsushima, Kanazawa City, Ishikawa	〒920-0364	TEL.076-240-0350	FAX.076-240-0357	
	Toyama Sales Office	2-10-24 Tanaka-machi, Toyama City, Toyama	〒930-0985	TEL.076-433-2151	FAX.076-432-8234	
Fukui Sales Office	Wing Hatta 101, 3-501 Toiya-cho, Fukui City, Fukui	〒918-8231	TEL.0776-28-5361	FAX.0776-28-5362		
Chubu Branch Office						
Nagoya Sales Office	Nagoya-Kyuso Building 6F, 1-1-19 Iseyama, Naka-ku, Nagoya City, Aichi	〒460-0026	TEL.052-339-0871	FAX.052-339-0895		
Environmental Systems Sales Section Nagoya-office	Nagoya-Kyuso Building 6F, 1-1-19 Iseyama, Naka-ku, Nagoya City, Aichi	〒460-0026	TEL.052-339-0875	FAX.052-339-0895		
Industrial Systems Sales Section Nagoya-office	Nagoya-Kyuso Building 6F, 1-1-19 Iseyama, Naka-ku, Nagoya City, Aichi	〒460-0026	TEL.052-339-0891	FAX.052-339-0895		
Fan Solution Engineering Section Nagoya-office	Nagoya-Kyuso Building 6F, 1-1-19 Iseyama, Naka-ku, Nagoya City, Aichi	〒460-0026	TEL.052-380-7544	FAX.052-339-0895		
Shizuoka Sales Office	3-2-15 Toyoda, Suruga-ku, Shizuoka City, Shizuoka	〒422-8027	TEL.054-285-3201	FAX.054-284-1831		
Numazu Sales Office	3-10 Wakaba-cho, Numazu City, Shizuoka	〒410-0059	TEL.055-923-1377	FAX.055-923-3449		
Hamamatsu Sales Office	132-4 Maruzuka-cho, Chuo-ku, Hamamatsu City, Shizuoka	〒435-0046	TEL.053-463-1701	FAX.053-464-1818		
Gifu Sales Office	3-7-11 Rokujo-minami, Gifu City, Gifu	〒500-8358	TEL.058-271-6651	FAX.058-274-7379		
Kansai Branch Office						
Osaka Sales Office No.1	Shinano-bashi Mitsui Building 3F, 1-11-7 Utsubohonmachi, Nishi-ku, Osaka City, Osaka	〒550-0004	TEL.06-4803-8805	FAX.06-4803-8823		
Osaka Sales Office No.2	Shinano-bashi Mitsui Building 3F, 1-11-7 Utsubohonmachi, Nishi-ku, Osaka City, Osaka	〒550-0004	TEL.06-4803-8806	FAX.06-4803-8824		
Osaka Sales Office No.3	Shinano-bashi Mitsui Building 3F, 1-11-7 Utsubohonmachi, Nishi-ku, Osaka City, Osaka	〒550-0004	TEL.06-4803-8807	FAX.06-4803-8829		
Osaka Market Development Group	Shinano-bashi Mitsui Building 3F, 1-11-7 Utsubohonmachi, Nishi-ku, Osaka City, Osaka	〒550-0004	TEL.06-4803-8819	FAX.06-4803-8835		
Environmental Systems Sales Section Osaka-office	Shinano-bashi Mitsui Building 3F, 1-11-7 Utsubohonmachi, Nishi-ku, Osaka City, Osaka	〒550-0004	TEL.06-4803-8808	FAX.06-4803-8825		
Construction Control Section Osaka-office	Shinano-bashi Mitsui Building 3F, 1-11-7 Utsubohonmachi, Nishi-ku, Osaka City, Osaka	〒550-0004	TEL.06-4803-8814	FAX.06-4803-8828		
Industrial Systems Sales Section Osaka-office	Shinano-bashi Mitsui Building 3F, 1-11-7 Utsubohonmachi, Nishi-ku, Osaka City, Osaka	〒550-0004	TEL.06-4803-8809	FAX.06-4803-8826		
Fan Solution Engineering Section Osaka-office	Shinano-bashi Mitsui Building 3F, 1-11-7 Utsubohonmachi, Nishi-ku, Osaka City, Osaka	〒550-0004	TEL.06-4803-8813	FAX.06-4803-8828		
Water Supply Engineering Section Osaka-office	Shinano-bashi Mitsui Building 3F, 1-11-7 Utsubohonmachi, Nishi-ku, Osaka City, Osaka	〒550-0004	TEL.06-4803-8813	FAX.06-4803-8828		
Shiga Sales Office	OH Kusatsu Building 4F, 1-40 Wakatake-cho, Kusatsu City, Shiga	〒525-0031	TEL.077-561-7007	FAX.077-561-7722		
Kyoto Sales Office	TMK Building 1F, 359 Takedanakagawara-cho, Fushimi-ku, Kyoto City, Kyoto	〒612-8412	TEL.075-647-1550	FAX.075-647-1537		
Kobe Sales Office	Daiwajisho-Sannomiya Building 5F, 3-1-2, Isohe-dori, Chuo-ku, Kobe city, Hyogo	〒651-0084	TEL.078-251-7125	FAX.078-251-7126		
Himeji Sales Office	1-192-305, Miyake, Kama-ku, Himeji City, Hyogo	〒672-8048	TEL.079-281-5511	FAX.079-281-1487		
Chugoku Branch Office						
Hiroshima Sales Office No.1/No.2	Daini Belle Vie Misasa 1F, 3-12-21 Misasa-machi, Nishi-ku, Hiroshima City, Hiroshima	〒733-0003	TEL.082-537-0660	FAX.082-537-0678		
Fan Solution Engineering Section Hiroshima-office	Daini Belle Vie Misasa 1F, 3-12-21 Misasa-machi, Nishi-ku, Hiroshima City, Hiroshima	〒733-0003	TEL.082-537-0660	FAX.082-537-0678		
Fukuyama Sales Office	337-2 Moriwake, Miyuki-cho, Fukuyama City, Hiroshima	〒720-0003	TEL.084-961-0222	FAX.084-961-0211		
Yonago Sales Office	5-1-50 Kamikubara, Yonago City, Tottori	〒683-0004	TEL.0859-32-2970	FAX.0859-32-2971		
Okayama Sales Office	2-24-14 Kaminakano, Kita-ku, Okayama City, Okayama	〒700-0972	TEL.086-241-4221	FAX.086-241-4230		
Shikoku Branch Office						
Takamatsu Sales Office	4-5 Higashihaze-machi, Takamatsu City, Kagawa	〒761-8054	TEL.087-867-4040	FAX.087-867-4042		
Matsuyama Sales Office	2-1-33 Asoda-machi, Matsuyama City, Ehime	〒790-0952	TEL.089-935-4335	FAX.089-935-4331		
Kyushu Branch Office						
Fukuoka Sales Office No.1/No.2	1-6-3 Sanno, Hakata-ku, Fukuoka City, Fukuoka	〒812-0015	TEL.092-474-7161	FAX.092-474-7167		
Kitakyushu Sales Office	5-11-13 Nakai, Kokurakita-ku, Kitakyushu City, Fukuoka	〒803-0836	TEL.093-571-5731	FAX.093-591-0192		
Kurume Sales Office	1-4-24 Yamakawa-cho, Kurume City, Fukuoka	〒839-0814	TEL.0942-88-5825	FAX.0942-88-5823		
Oita Sales Office	1-10-15 Nakanishi-machi, Oita City, Oita	〒870-0135	TEL.097-551-1857	FAX.097-552-0589		
Kumamoto Sales Office	2-7-12 Kaminabe, Higashi-ku, Kumamoto City, Kumamoto	〒861-8010	TEL.096-380-8388	FAX.096-380-1795		
Nagasaki Sales Office	Yokoyama Building 1F, 7-5 Ohashi-machi, Nagasaki City, Nagasaki	〒852-8134	TEL.095-848-2221	FAX.095-848-5137		
Miyazaki Sales Office	870 Houji, Miyazaki City, Miyazaki	〒880-0123	TEL.0985-39-1577	FAX.0985-39-1089		
Kagoshima Sales Office	2-59-11 Arata, Kagoshima City, Kagoshima	〒890-0054	TEL.099-253-4321	FAX.099-253-4325		
Okinawa Sales Office	2-1-5 Tsubogawa, Naha City, Okinawa	〒900-0025	TEL.098-851-9591	FAX.098-851-9593		
TERAL TECHNICAL SERVICE INC.	Tokyo Head Office	Iidabashi Building, 2-3-28 Koraku, Bunkyo-ku, Tokyo	〒112-0004	TEL.03-3818-0700	FAX.03-3818-6817	
	Fukuyama Head Office	230 Moriwake, Miyuki-cho, Fukuyama City, Hiroshima	〒720-0003	TEL.084-955-1111	FAX.084-955-5777	
	Yokohama Branch Office	Technowave 100 10F, 1-1-25 Shinurashima-cho, Kanagawa-ku, Yokohama City, Kanagawa	〒221-0031	TEL.045-450-5367	FAX.045-450-5368	
	Nagoya Branch Office	Nagoya-Kyuso Building 3F, 1-1-19 Iseyama, Naka-ku, Nagoya City, Aichi	〒460-0026	TEL.052-339-0894	FAX.052-331-5103	
	Osaka Branch Office	Shinano-bashi Mitsui Building, 1-11-7 Utsubohonmachi, Nishi-ku, Osaka City, Osaka	〒550-0004	TEL.06-4803-8711	FAX.06-4803-8714	
	Sapporo Sales Office	23-1-3 Kita-juichijō-nishi, Chuo-ku, Sapporo City, Hokkaido	〒060-0011	TEL.011-644-2594	FAX.011-631-8998	
	Sendai Sales Office	2-3-12, Tomizawa, Taihaku-ku, Sendai City, Miyagi	〒982-0032	TEL.022-307-3120	FAX.022-245-2910	
	Omiya Sales Office	2-1018-2 Owada-cho, Minuma-ku, Saitama City, Saitama	〒337-0053	TEL.048-681-7810	FAX.048-681-7814	
	Chiba Sales Office	4-13-8, Suehiro, Chuo-ku, Chiba City, Chiba	〒206-0843	TEL.043-264-5260	FAX.043-305-8004	
	Hiroshima Sales Office	Daini Belle Vie Misasa 1F, 3-12-21 Misasa-machi, Nishi-ku, Hiroshima City, Hiroshima	〒733-0003	TEL.082-509-5230	FAX.082-239-6280	
	Fukuyama Sales Office	337-2 Moriwake, Miyuki-cho, Fukuyama City, Hiroshima	〒720-0003	TEL.084-955-8678	FAX.084-955-5359	
	Fukuoka Sales Office	1-6-3 Sanno, Hakata-ku, Fukuoka City, Fukuoka	〒812-0015	TEL.092-474-7166	FAX.092-474-7167	
	TERAL TAKU Inc.	Head Office/Factory	3898 Nagao Minamitaku-machi, Taku City, Saga	〒846-0023	TEL.0952-75-4121	FAX.0952-74-3384
	TERAL KURITA INC.	Head Office/Factory	2-101 Arai, Kitamoto City, Saitama	〒364-0026	TEL.048-591-1721	FAX.048-591-5717
	TANIYAMA CO., LTD.	Head Office/Factory	18 Kitahatsushima-cho, Amagasaki City, Hyogo	〒660-0834	TEL.06-4868-3530	FAX.06-4868-3672

Broadly contributing to society through various community activities and environmental activities

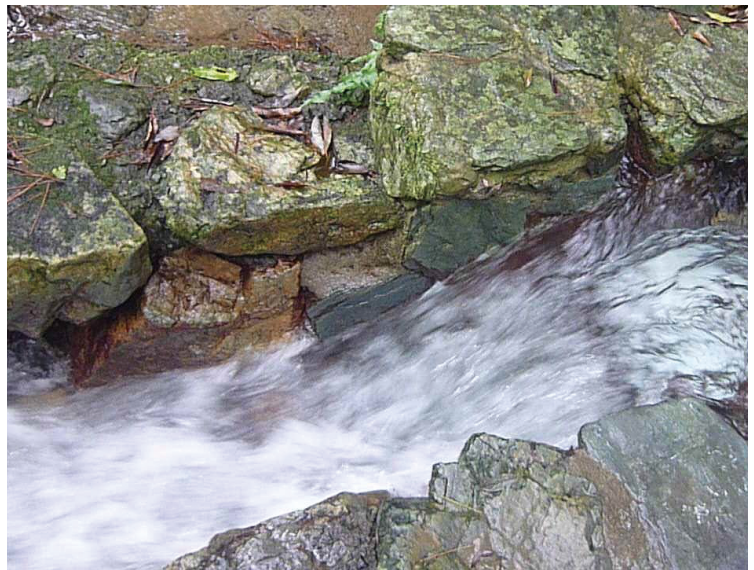
TERAL has developed various environmentally contributory systems, including kitchen garbage disposals and reuse of water, while working to provide energy savings and noise reduction of products. With ISO14001 certification (in June 2008), we strive to reduce environmental loads in all business activities. Furthermore, we actively participate in community and local government activities as a model corporate citizen, aiming to be an excellent company that contributes to society.

Participating in demonstration experiments of small electric power generation.

As an industry-academia cooperative project with Kagoshima University, we have participated in research of a small electric power generation demonstration plant for hilly and mountainous areas. TERAL pump technologies have contributed to the utilization of natural energy by means of agricultural waterways. The electricity generated is used for nighttime illumination and powering electric cars.



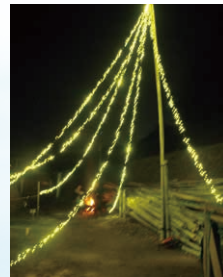
Pumping-up power generation facilities



Small hydraulic power generation



Effective use for electric cars



Nighttime illumination by electricity generated



Holding a summer evening party in a cool breeze at the head office

Every July, TERAL holds a “summer evening party in a cool breeze” at its head office (Fukuyama City, Hiroshima). The first party was held in 1984 for the purpose of promoting friendship between employees, and since then, we have come to invite our neighbors, and at present, it has become a part of the life of the community as the number of participants to the big event including our employees exceeds 1000.



About 1000 participants including people from the local community



Summer festival



Local people participating in events

Conducting evacuation and fire fighting drills

We conduct evacuation and firefighting drills at the beginning of December when many fires break out. Evacuation drills from the workplace and demonstration of water discharge drills by the first-aid firefighting team are conducted.



Water-discharge drill



Evacuation and firefighting drill

Installation of a disaster-prevention well

The photograph on the right-hand side shows a disaster-prevention well for emergency use installed in our Tokyo office (Bunkyo-ku, Tokyo). Since it can be used even in the case of a power outage as an electric pump and manual pump are installed in parallel, it can also be applied as daily life water for the neighborhood during a disaster, etc. This equipment has been registered as Bunkyo-ku’s disaster-prevention equipment.



Disaster prevention agreement well designation notice



Disaster prevention agreement well

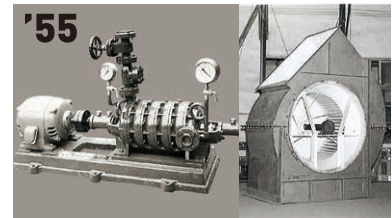
History



1918 Our founder, Gisaburo Sugata, established Sugahei Shokai machinery department in Kasaoka-machi, Fukuyama City.
Began manufacturing and selling pumps, and selling industrial machines both domestically and overseas.

1938 Moved the factory to a larger site in Okinogami-cho (current Konan-cho), Fukuyama City.

1955 Changed the company name to Kyokuto Machine Manufacturing Co., Ltd.
Began manufacturing air blowers in addition to pumps under Kyokuto brand.



1958 Designated as a streamlined model factory by the Small and Medium Enterprise Agency.

1965 Entered into a technology partnership with Franklin Inc. (U.S.A.).



1966 Entered into a technology partnership with Deming Inc. (U.S.A.).

1967 Moved the head office and main factory to Miyuki-cho, Fukuyama City.
Completed a modern factory that showcased industry-leading scale and latest facilities.



1971 Began developing and selling total heat exchangers in addition to pumps and air blowers.

1974 Developed fire pump units that set a precedent for "unitization," the mainstream of today's market.

1975 Developed the industry's first water supply unit.



1976 Established Kyokuto Services Co., Ltd. (current Teral Technoservice Inc.).

1981 Entered into a business partnership with Flygt Inc. (Sweden).

1985 Addressed "Improving Water Quality Through Destratification" with Shiga Prefecture's Lake Biwa Research Institute.



1986 Released the "ARLS Series," which caused a revolution in pump materials.

1987 Completed the General Research Institute. Released the total heat exchanger "Econo S."

1988 Completed our Saitama factory. Began supporting the Kansai Hydrosphere Environment Interest Research Organization.
Changed the company name to TERAL Kyokuto Inc.



1989 Won the Medium and Small Business Research Institute Award.

1990 Established Teral Chemical Inc. (current Production Dept.).
Organized an overseas trip for employees to celebrate surpassing ¥20 billion in annual sales.

1991 Established TERAL THAI CO., LTD.

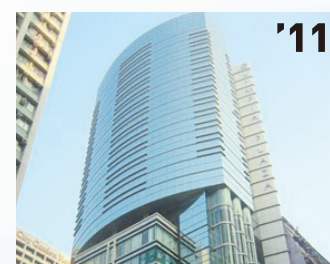
1993 Established TERAL DENSO INC. (current Production Dept.).
Held Living Environment Forum '93 nationwide.

1994 Established TERAL ENVIRONMENTAL SYSTEMS CO., LTD. (current TERAL TECHNOSERVICE INC.).

1995 Completed TERAL THAI CO., LTD.'s new factory in Ayutthaya. Established Teral(H.K.) Ltd.



- 1997 Bought property and building in Bunkyo-ku, Tokyo (TERAL Koraku Building/Tokyo office).
-
- 1998 Achieved 7 million hours of accident-free production.
TERAL SERVICES and TERAL ENVIRONMENTAL SYSTEMS merged to form TERAL TECHNOSERVICE INC.
Received ISO9001 certification.
-
- 1999 TERAL DENSO INC. (current Production Dept.) received ISO9001 certification.
-
- 2000 TERAL CHEMICAL INC. (current Production Dept.) received ISO9001 certification.
-
- 2002 Established Teral General Machine (Shanghai) Co., Ltd.
-
- 2003 All the shares of Taku Electric Corp. (current TERAL TAKU INC.) were transferred from Mitsubishi Electric Corporation.
-
- 2004 Formed a capital alliance with Kurita Electric Works, Ltd. (current TERAL KURITA INC.).
-
- 2005 Disposer business was transferred from SEKISUI AQUA SYSTEMS CO., LTD.
-
- 2006 Completed Teral General Machine (Shanghai) Co., Ltd.'s new factory.
Completed the Ekiya factory exclusively for large-sized fans.
-
- 2008 Pump business was transferred from Matsushita Electric Works, Ltd.
Changed the company name to TERAL INC.
Received ISO14001 certification.
-
- 2009 Established Anhui Taiwei Electric Machine Co., Ltd. (T&W), a new joint venture company in China.
-
- 2010 Coolant pump and ring blower business was transferred from Fuji Electric Systems Co., Ltd.
-
- 2011 Established Teral Asia Limited.
-
- 2012 Established Teral Malaysia Sdn. Bhd.
-
- 2013 The shares of TANIYAMA CO., LTD. were transferred from Taikisha Ltd. to the TERAL group.
-
- 2014 Established Teral Pumps & Fans North America Ltd.
Established Teral Middle East F.Z.C.
Established TERAL VIETNAM LIMITED LIABILITY COMPANY.
-
- 2015 Established PT. Teral Indonesia Pumps and Fans.
-
- 2016 Established Teral-Aerotech Fans Private Ltd.
-
- 2018 Celebrated 100th anniversary.
Completed new office building (ZEB office).
-
- 2019 Established Teral Engineering Center (Shanghai) Co., Ltd.
-
- 2021 Established Teral Philippines Inc.



Teral Asia Limited



TERAL

TERAL INC.

www.teral.net

